

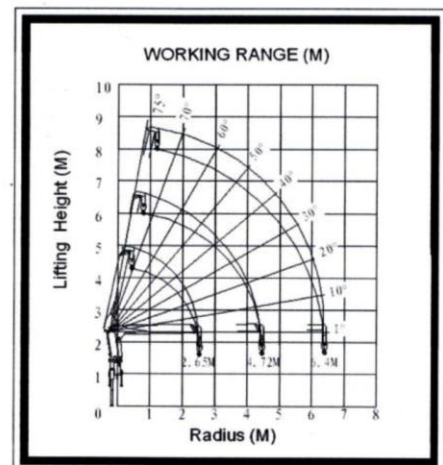
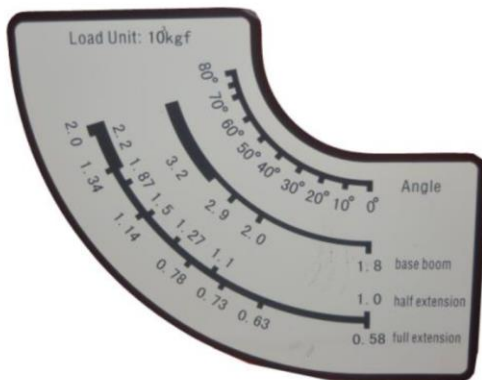
CRANE



1. Kendaraan

- Daya Mesin : 130 Ps / 2.700 rpm
- Torsi : 38.0 kgm/1800 rpm

- Daya Tanjak : 39,6 Tan %
- Isi Silinder : 4.009 cc
- Kapasitas Tangki Bahan Bakar : 100 Liter
- Sistem Kelistrikan (accu) : 12V-60Ah x 2
- GVW : 8.250 Kg
- Kecepatan Max : 97 km/h



PT. Berkat Anugerah Raya

Office : Jl. Biliton No. 14 A, Surabaya 60281 Jawa Timur

Telp. (031) 99453274

Workshop : Jl. Berbek Industri III/19, Sidoarjo, Jawa Timur

Telp. (031) 8432124, 8432006

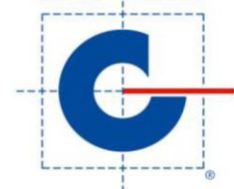
Email : ptberkatanugerahraya@gmail.com

website : www.berkatanugerahraya.com



Quality
Approved
ISO 9001

JAS-ANZ



2. Crane

Type	: Hydraulic Telescoping Boom Crane
Lifting Capacity	: 3200 kg/2m 1800 Kg/2.5 m 780kg/5m 580kg/6.4m
Max. Lifting Capacity	: 63 kN.m
Max. Working Radius	: 6.4m
Max. Lifting Height	: 8m
Rated Pressure	: 21 Mpa
Oil Tank Capacity	: 45 L
Rated Displacement	: 30 ml/r
Boom Type/Section	: HEX/3Section
Swing Angle	: 1-75
Boom/Retractation speed	: 3.75m /10s
Elevating Angle Speed	: 0-75°/7s
Hook Wire Rope Spec	: Ø 8 mm
Swing speed	: 0-2 r/min
Hook Hoisting Speed	: 17 m/min
Length of Basic Boom	: 2650mm
Outrigger Span (Horizontal)	: 3600mm
Crane Weight	: 1100kg
Max. Boom Angle	: 75°